

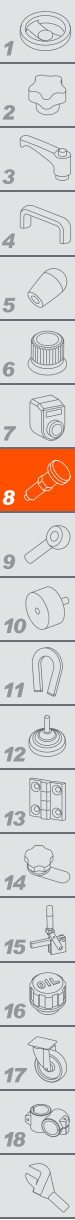
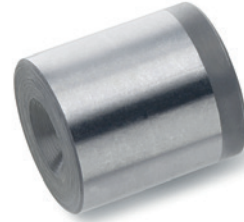
MATERIAL

Ground and hardened steel.

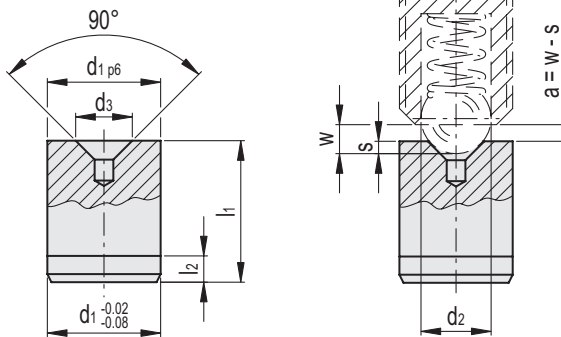
FEATURES AND APPLICATIONS

GN 249.1 ball bushings are used together with ball or bolt spring plungers whenever a contact surface with high resistance to wear is required.

For an optimum plunger detention, the max distance "a", obtained from the difference between the spring travel "w" of the chosen plunger and the ball depth "s" inside the ball bushing cavity, must not be exceeded. In particular, they are recommended for use with plungers with high spring loads and plungers with reinforced spring.



Conversion Table	
1 mm = 0.039 inch	
d1	
mm	inch
4	0.16
6	0.24
8	0.31
10	0.31
12	0.47
16	0.63
20	0.79



METRIC

Code	Description	d1	d2	d3	l1 ±0.5	l2	s		s			s		w	⚖	
							GN 615	GN 615.2	GN 615.3	GN 615.5	GN 815	GN 815.1	GN 615.8			GN 615.9
GN.34211	GN 249.1-4-1,8	4	#	1.8	5	1.5	M4 = 0.4	M6 = 0.4	Ø 3 = 0.4	Ø 3.5 = 0.4	Ø 5 = 0.4	M5 = 0.4	M5 = 0.4	#	1	
GN.34213	GN 249.1-6-2,5	6	#	2.5	8	1.5	M5 = 0.7 - M6 = 0.5	M8 = 0.5	Ø 4 = 0.7 - Ø 5 = 0.4	Ø 4 = 0.7 - Ø 5 = 0.5	Ø 6 = 0.5	M6 = 0.8 - M8 = 0.5	M6 = 0.8 - M8 = 0.5	#	2	
GN.34214	GN 249.1-8-3,5	8	#	3.5	10	2	M8 = 0.8	M10 = 0.8	Ø 6 = 0.7	Ø 6 = 0.8	Ø 8 = 1.5	M10 = 0.8	M10 = 1	#	4	
GN.34215	GN 249.1-10-4,5	10	#	4.5	12	2	M10 = 1	M12 = 0.9	Ø 8 = 0.9	Ø 8 = 1	Ø 10 = 0.9	M12 = 1	M12 = 1	#	7	
GN.34216	GN 249.1-12-6	12	#	6	14	2.5	M12 = 1.4	M16 = 1.2	Ø 10 = 1.4	Ø 10 = 1.4	Ø 12 = 1.2	M16 = 1.2	M16 = 1.5	#	12	
GN.34217	GN 249.1-16-7,5	16	#	7.5	18	2.5	M16 = 1.7	-	Ø 12 = 1.7	Ø 12 = 1.7	-	M20 = 1.7	M20 = 1.7	#	27	
GN.34218	GN 249.1-20-8,5	20	#	8.5	22	3	M20 = 1.8	-	-	-	-	M24 = 1.6	-	#	52	

See the corresponding plunger